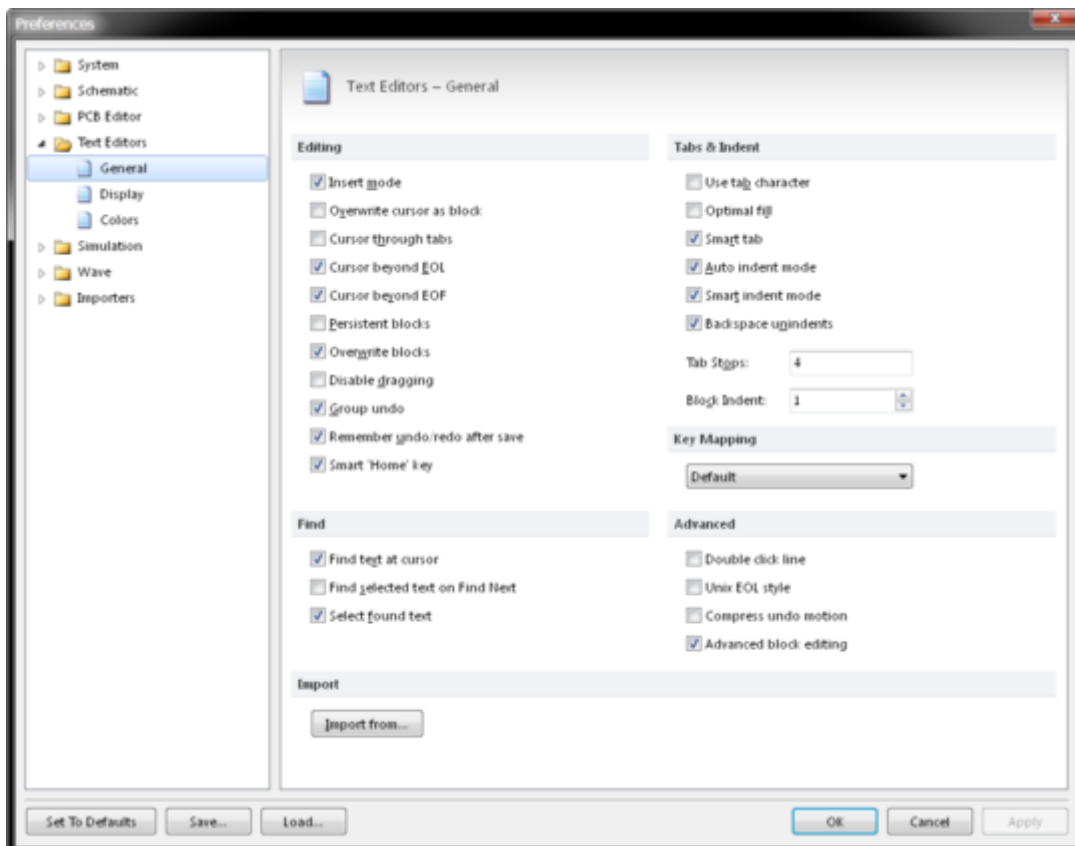


Text Editors - General

Modified by Rob Evans on Oct 3, 2014

Parent page: [Text Edit Preferences](#)



The **Text Editors - General** page of the *Preferences* dialog.

Summary

The **Text Editors - General** page of the *Preferences* dialog provides configuration controls related to the editing behaviour of the Text Editor.

Access

The **Text Editors - General** page is part of the main *Preferences* dialog (**File** | [System Preferences...](#)) and is accessed by selecting the **General** entry under the **Text Editors** folder, in the left hand pane of the dialog.

Options/Controls

Editing

- **Insert Mode** - Enable to make text entered at the cursor be inserted without overwriting the existing text. If this option is disabled, text at the cursor is overwritten.

The keyboard **Insert** key can be used to toggle Insert Mode in the Text editor without changing this default setting. The mode is indicated by the **Overwrite** or **Insert** message on the status bar.

- **Overwrite cursor as block** - Enable to make the cursor be overwritten as a block.
- **Cursor through tabs** - Enable to allow the arrow keys to move the cursor to the logical spaces within each tab character.
- **Cursor Beyond EOL** - Enable to allow the cursor to be positioned beyond the end-of-line (EOL) character on the text document.
- **Cursor Beyond EOF** - Enable to allow the cursor to be positioned beyond the end-of-file (EOF) character on the text document.
- **Persistent blocks** - Enable to keep marked blocks on the text document marked, even when the cursor is moved using the arrow keys. When a new block is selected, the previous block is removed.
- **Overwrite blocks** - Enable to allow a marked block of text to be replaced with whatever is typed next. If the **Persistent Blocks** option is also selected, text entered is appended following the currently selected block.
- **Disable dragging** - Enable to inhibit the ability to drag selected blocks of text across the text document. By default this disable dragging option is disabled.
- **Group undo** - Enable so that the last editing command, as well as any subsequent editing commands of the same type, are undone in one step when selecting **Edit » Undo** or pressing the **Alt + Backspace** keys.
- **Remember undo/redo after save** - Enable to make Undo data remain after a text file is saved, allowing all changes to be reverted. This option is enabled by default. Disable this option and all the Undo data is lost after saving a text file.
- **Smart Home key** - Enable to make the **Home** key (when used for the first time) cause the cursor to jump to the first non-space character in the current line, then with the next **Home** key press, the cursor will jump to the beginning of the line, and so on. This **Home** key behaviour matches that of the Microsoft™ Visual Studio™ product. Disable this option and the **Home** key will always cause the cursor to jump to the beginning of the current line.

Find

- **Find text at cursor** - Enable to cause the current text at the cursor to be placed into the **Text to find:** field in the *Find Text* dialog box. If this option is disabled the search text must be manually entered.
- **Find selected text on Find Next** - The normal process for searching text is to press **Ctrl - F**, enter a string and then press **OK**, which is all repeated to look for the next string occurrence. This option enables the **F3** key for subsequent searches, removing the need to re-enter the same search text.
- **Select found text** - If this option is enabled, the found text is selected in the document and

will be copied to the clipboard when the copy command is used.

Tabs & Indent

- **Use tab character** - When enabled, a literal tab character is inserted for each tab. When disabled, space characters are inserted instead. Enable the **Use Special Symbols** option to see tab characters in the text document.
- **Optimal fill** - Enable to make a line auto-indent with the minimum number of characters possible, using tabs and spaces as necessary. Enable the **Use Special Symbols** option to see the tab symbols on the document.
- **Smart tab** - Enable so that a new line will tab to match the position of the first non-whitespace character on the preceding line.
- **Auto indent mode** - Enable so that pressing the **Enter** key to create a new line will also tab to match the position of the first non-whitespace character on the preceding line.
- **Smart indent mode** - Enable programming-aware tab behavior, currently used only when editing C files. For example, when this option is enabled and a closing curly bracket is typed, the editor will indent this character so that it is aligned to the matching opening curly bracket. Disable this option and the tab works conventionally.
- **Backspace unindents** - Enable for the backspace key to remove an indent in one keypress. When disabled, backspace treats indents/tabs and multiple space characters.
- **Tab Stops** - Define the editor tab stops in number of characters represented by a tab.
- **Block Indent** - Specifies the standing number of spaces to indent text, and the Indent/Outdent space used for a marked block of text. The Indent and Outdent block key commands are **Ctrl + Shift + I** and **Ctrl + Shift + U**, respectively.

Key Mapping

Select one of the following Key Mapping assignments for editing a text document:

- **Default** - Map the editor keys to match CUA mappings.
- **Borland Classic** - Map keys to match the Borland Classic editor keys.
- **Brief** - Map keys to match the Brief keystrokes.
- **Epsilon** - Map keys to match the Epsilon keys.
- **Visual Studio** - Map keys to match the Visual Studio editor.

Advanced

- **Double click line** - Enable so that a line will be highlighted when a character in the line is double-clicked. If this option is disabled, only the selected word is highlighted.
- **Unix EOL style** - Enable so that when a text file is saved, each line will be separated using a single LF character (Unix style) instead of a CR/LF pair.
- **Compress undo motion** - Enable so that changing the caret position does not go into the undo list. Normally, if text is modified and the **PgUp** key pressed, Undo would have to be used twice to restore the text to the original state. With the **Compress Undo Motion** enabled, that can be done with a single Undo.
- **Advanced block editing** - If enabled, all the selected blocks are simultaneously overwritten when typing starts.

Import

- **Import from** - Click to import text editor preference settings from Tasking or MS Visual Studio™.

Source URL:

[http://documentation.circuitmaker.com/display/CMAK/TextEdit_Dlg-TextPrefsForm_General\(\(Text+Editors+-+General\)\)
_CM](http://documentation.circuitmaker.com/display/CMAK/TextEdit_Dlg-TextPrefsForm_General((Text+Editors+-+General))_CM)