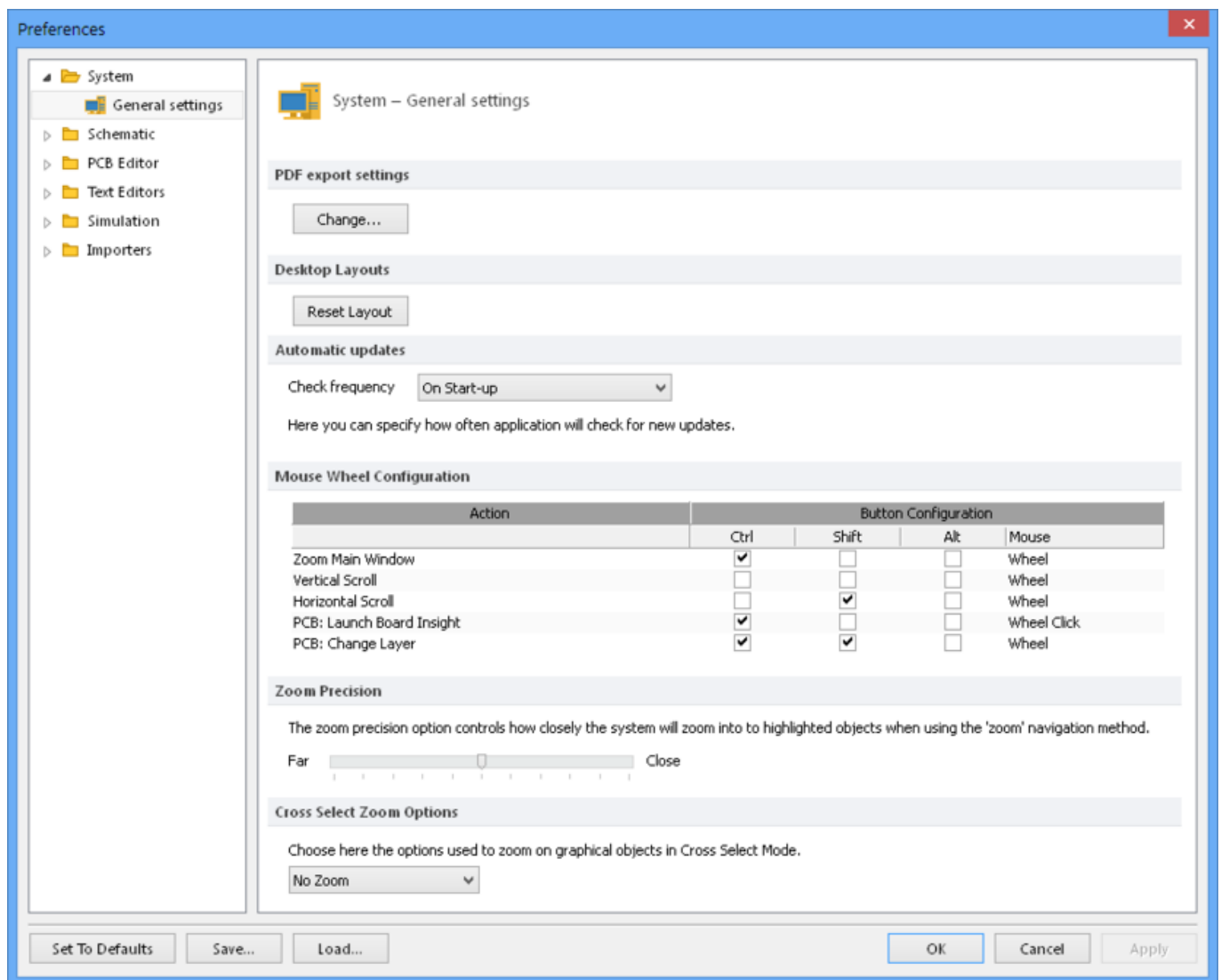


System - General Settings

Modified by Rob Evans on Jun 16, 2015

Parent page: [Workspace Manager Preferences](#)

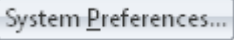


The **System - General Settings** page of the *Preferences* dialog.

Summary


The **System - General Settings** page of the *Preferences* dialog provides controls relating to the general behavior and configuration of the workspace.

Access

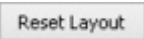
The **System - General Settings** page is part of the main *Preferences* dialog (**File** | ) and is accessed by clicking the **General Settings** entry under the **System** folder, in the left hand pane of the dialog.

Options/Controls

PDF export settings

Define PDF generator page configurations in the *Custom page sizes for exporting to PDF* dialog, opened by the  button.

Desktop Layouts

Use the  button to return the desktop layout to its default configuration for the position/visibility of panel and toolbars, the size of document windows, and so on.

Automatic Updates

Select how often the system will check for software updates from Altium's cloud-based repository. Choose from a range of preset update periods, including 'On Start-up', in the **Check frequency** drop down menu.

Mouse Wheel Configuration

Configuration settings for a mouse that has a scroll wheel between the two mouse buttons.

- **Action** - The list of mouse wheel configurations for various actions on a document, such as **Ctrl + mouse wheel scroll** to zoom in or out in the PCB/Schematic workspace - the default configuration for the **Zoom Main Window** setting.
- **Button Configuration** - The list of mouse wheel configurations for each action on a PCB/Schematic document. For example, the default **PCB: Change Layer** configuration is set for **Ctrl + Shift + mouse wheel scroll** to move through the available PCB Layers in the PCB editor workspace.

Zoom Precision

The zoom precision option controls the degree of zoom applied when objects are highlighted during a zoom navigation action (such as in **Cross Select Mode**). As the slider is moved towards **Close**, the magnification increases.

Cross Select Zoom Options

Select the desired zoom behavior in **Cross Select Mode (Home | Select » Cross Select Mode)** from the associated drop down menu. The options are:

- **No Zoom** - The corresponding PCB/schematic document will select the object without zooming into it.
- **Zoom to Last Selected** - The corresponding PCB/schematic will zoom into the most recently selected object, when multiple objects have been selected or (obviously) when a single object

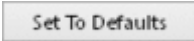
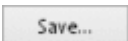
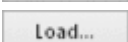
has been selected.

- **Zoom to All Selected** - When multiple objects have been selected, the respective PCB/schematic will zoom to show all selected objects.

See [Cross-Probe & Cross-Select Tools](#) for more information.

Configurations

CircuitMaker's Preferences setting can be reset, saved and reloaded using the configuration buttons at the bottom of the dialog:

-  - Reset CircuitMaker's Preference settings to their default configuration.
-  - Save the current Preferences settings the local drive as a *.DXPPrf file.
-  - Load a previously saved DXPPrf file to configure CircuitMaker's preferences to those settings.

Source URL:

[http://documentation.circuitmaker.com/display/CMAK/WorkspaceManager_Dlg-SysPrefsForm_GeneralSimple\(\(System+-+General+Settings\)\)_CM](http://documentation.circuitmaker.com/display/CMAK/WorkspaceManager_Dlg-SysPrefsForm_GeneralSimple((System+-+General+Settings))_CM)