

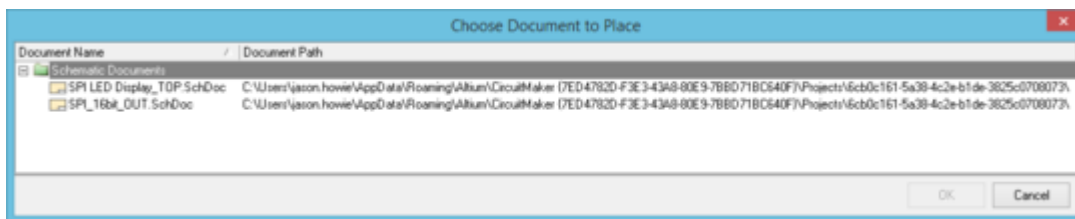
Choose Document to Place

Modified by Jason Howie on Oct 3, 2014

Other Related Resources

[Sheet Symbol \(Object\)](#)

Parent page: [Sch Dialogs](#)



The *Choose Document to Place* dialog.

Summary

This dialog allows the designer to choose the target schematic document that is to be referenced by a newly-created sheet symbol, when using the **Create Sheet Symbol From Sheet** command.

Make the sheet that is to include the sheet symbol, the active document before proceeding to use this dialog.

Access

The dialog is accessed from the Schematic Editor, by right-clicking away from any design objects, and using the **Sheet Actions » Create Sheet Symbol From Sheet** command on the context menu.

Options/Controls

The main area of the dialog lists all candidate schematic documents for the project, that can validly be used as the target reference sub-sheet for the new sheet symbol. Each document is listed in terms of its name, and path to the folder in which it resides.

Simply click on an entry to select the required document.

As the sheet symbol is created and placed on the active sheet, this sheet will not be listed. This is because a sheet symbol cannot reference the same sheet on which it is itself placed.

The **Document Path** reflects the local sandbox residence for the project. The actual project itself is committed and released to the Community Vault. In other words, the sandbox instance

is used to accommodate local changes to the design, prior to synchronization with the managed project 'master' stored in that vault.

Source URL:

[http://documentation.circuitmaker.com/display/CMAK/Sch_Dlg-ChooseDocumentToPlace\(\(Choose+Document+to+Place\)\)_CM](http://documentation.circuitmaker.com/display/CMAK/Sch_Dlg-ChooseDocumentToPlace((Choose+Document+to+Place))_CM)