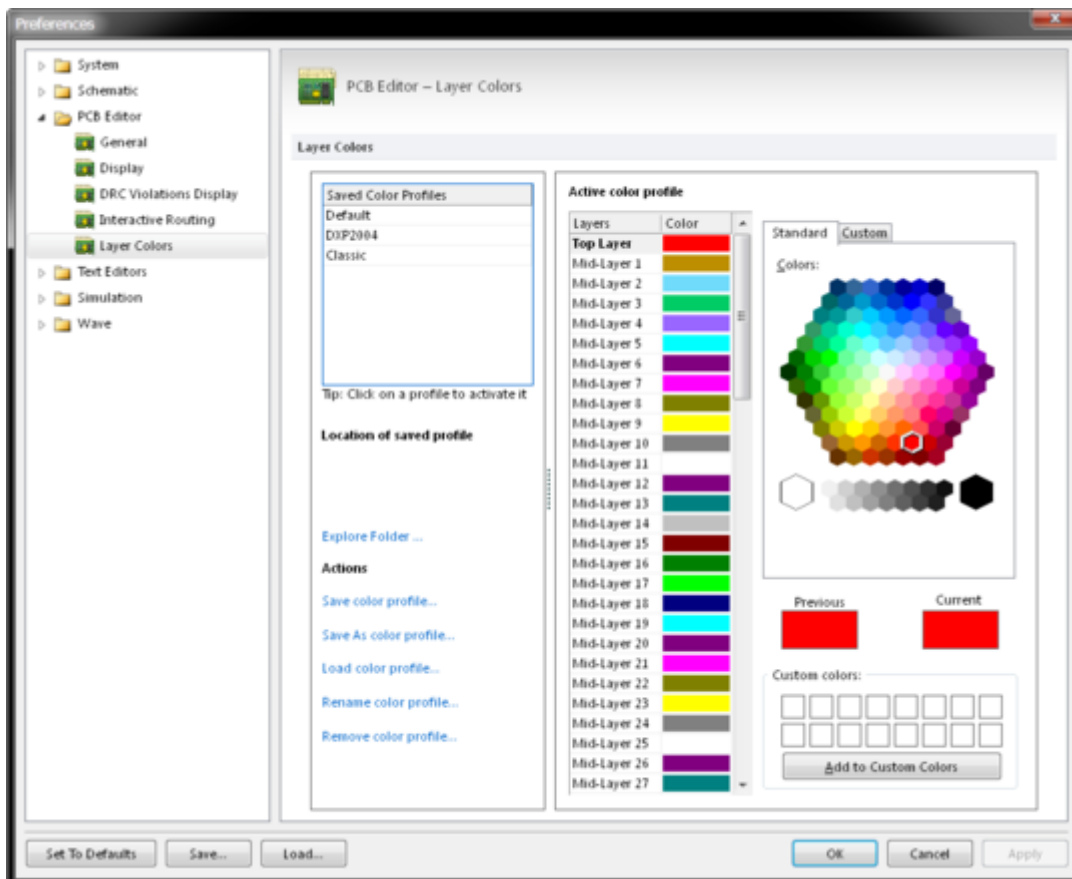


PCB Editor - Layer Colors

Modified by Rob Evans on Oct 3, 2014

Parent page: [PCB Preferences](#)



The **PCB Editor - Layer Colors** page of the *Preferences* dialog.

Summary

The **PCB Editor - Layer Colors** page of the *Preferences* dialog provides controls that relate to the Layer Color settings within the PCB workspace.

Access

The **PCB Editor - Layer Colors** page is part of the main *Preferences* dialog (**File** | **System Preferences...**) and is accessed by clicking the **Layer Colors** entry under the **PCB Editor** folder, in the left hand pane of the dialog.

Options/Controls

Layer Colors

- **Saved Color Profiles** - Lists the names of the currently saved 2D color profiles. Select a name to view the color profile. Click **OK** to use the color profile and close the dialog.
- **Location of Saved Profile** - Indicates the filepath of a saved 2D color profile. Hover the cursor over a name under the **Saved Color Profiles** list to see the saved path.
- **Explore Folder** - Open the folder location for any saved profiles.

Actions

- **Save color profile** - Save the currently active color profile with the current color settings.
- **Save As color profile** - Save the current color settings into a new color profile. The file name given to the new color profile will be used to identify it in the list of color profiles.
- **Load color profile** - Load a previously saved color profile from disk.
- **Rename color profile** - Save the current color profile under a new name. This has the effect of renaming the color profile file on disk.
- **Remove color profile** - Delete the current color profile from disk.

2D color settings are system-based. All PCB documents will use the current 2D color profile.

Active color profile

- **Layers / Color** - A list of all available layers and their associated colors. To change the color of a given layer, select it in the Layers list and select a new color from the **Standard** or **Custom** tabs.
- **Standard** - The Standard color pattern for selecting the active layer color.
- **Custom** - The Custom color pattern used for selecting a customized active layer color.
- **Previous** - A color box that displays the color of a selected layer in the **Layers** column. When a new color is selected for the layer, this box will remain showing the previous color for comparison.
- **Current** - A color box that will display a new color configured for a selected layer. When a new layer color has been selected from the Standard/Custom Pattern, it will be displayed in the **Current** color box.
- **Custom colors** - This area shows any custom colors that have been added. A color can be directly selected from this area to configure a new color for an active layer. The default customized color is white.
- **Add to Custom Colors** - Click to add the selected color to **Custom colors** area.



To keep changes made to the 2D color settings, save the color profile (from the **Actions** area) before closing the dialog.

Source URL:

[http://documentation.circuitmaker.com/display/CMAK/PCB_Dlg-SystemOptionsLayerColors_Frame\(\(PCB+Editor+-+Layer+Colors\)\)_CM](http://documentation.circuitmaker.com/display/CMAK/PCB_Dlg-SystemOptionsLayerColors_Frame((PCB+Editor+-+Layer+Colors))_CM)