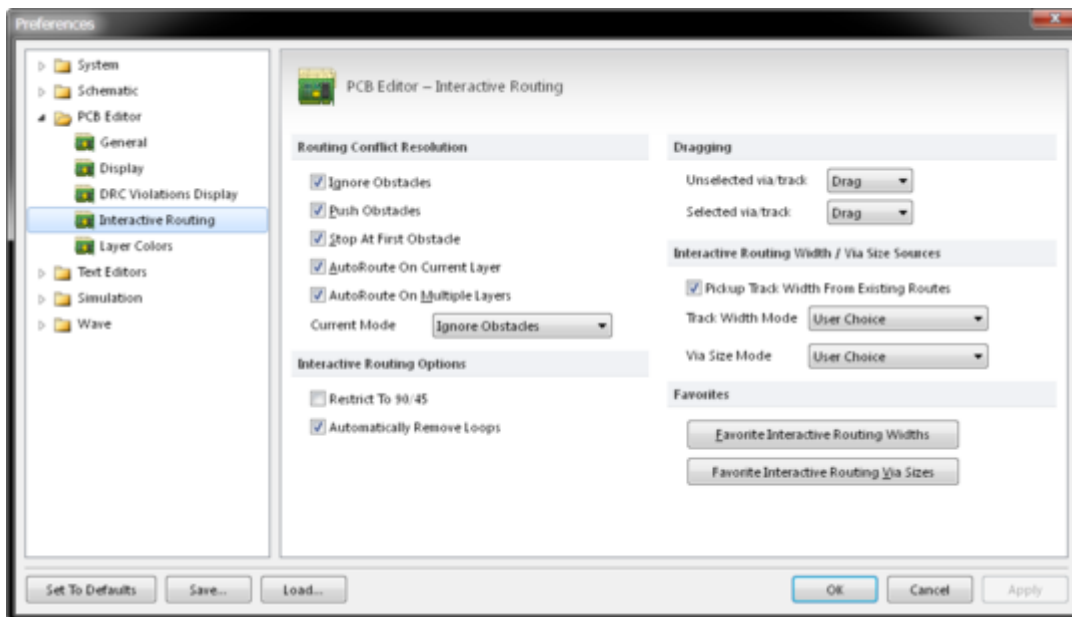


PCB Editor - Interactive Routing

Modified by Rob Evans on Oct 3, 2014

Parent page: [PCB Preferences](#)



The **PCB Editor - Interactive Routing** page of the *Preferences* dialog.

Summary

The **PCB Editor - Interactive Routing** page of the *Preferences* dialog provides options relating to the functionality of the Interactive Routing feature within the PCB workspace.

Access

The **PCB Editor - Interactive Routing** page is part of the main *Preferences* dialog (**File | System Preferences...**) and is accessed by clicking the **Interactive Routing** entry under the **PCB Editor** folder, in the left hand pane of the dialog.

Options/Controls

Routing Conflict Resolution

- **Ignore Obstacles** - Select to have the interactive router allow the track to pass through obstacles while routing.
- **Push Obstacles** - Select to have the Interactive Router move existing tracks out of the way while routing. This mode can also push vias to make way for the new routing. If this mode cannot push an obstacle without causing violation, an indicator appears to show the route is

blocked.

- **Stop At First Obstacle** - Select to have the Interactive Router stop routing when it encounters the first obstacle in its path.
- **AutoRoute On Current Layer** - Select to enable autoroute on current layer.
- **AutoRoute On Multiple Layers** - Select to enable autoroute on Multiple Layers.
- **Current Mode** - This field displays the current Routing Conflict Resolution mode chosen, when using the Interactive Router. Use the associated drop-down to change the mode as required.

You can switch routing modes on-the-fly using **Shift + R** during routing.

Interactive Routing Options

- **Restrict to 90/45** - Enable to restrict the routing to 90 degrees and 45 degrees only.
- **Automatically Remove Loops** - Enable to automatically remove any redundant loops that are created during manual routing. This allows a connection to be re-routed without having to manually remove redundant tracks.



When loops are needed, such as with power nets, the **Remove Loops** option can be toggled for a selected net by editing its net property from the *Edit Net* dialog via the *PCB* panel. The **Remove Loops** local setting for the specified net overrides this global setting for the same net.

Dragging

Configure the Dragging options to allow direct dragging, or require selection first.

- **Unselected via/track** - Set the default behavior of dragging an unselected via or track to be either a Move or Drag action.
- **Selected via/track** - Set the default behavior of dragging a selected via or track to be either a Move or Drag action.

Interactive Routing Width/Via Size Sources

- **Pickup Track Width From Existing Routes** - Enable to use the existing track width when routing from an placed track. That is, even if the current routing width is different to the existing track, the existing track width will be adopted when you continue the route from it.
- **Track Width Mode** - Choose a track width mode for interactive routing. The available modes are:
 - **User Choice** - With this mode enabled the width is determined from the width selected in the *Choose Width* dialog - accessed by pressing **Shift + W** while routing.
 - **Rule Minimum** - With this mode enabled the design rule minimum width defined for the current net will be used.
 - **Rule Preferred** - With this mode enabled the design rule preferred width defined for the current net will be used.
 - **Rule Maximum** - With this mode enabled the design rule maximum width defined for the current net will be used.
- **Via Size Mode** - Choose one of the via size modes for interactive routing. The available

modes are:

- **User Choice** - With this mode enabled the via size is determined from the size selected in the *Choose Via Sizes* dialog - accessed by pressing **Shift + V** while routing.
- **Rule Minimum** - This mode uses the minimum via size rule.
- **Rule Preferred** - This mode uses the preferred via size rule.
- **Rule Maximum** - This mode uses the maximum via size rule.

Favorites

- **Favorite Interactive Routing Widths** - Click this button to pop up the *Favorite Interactive Routing Width* dialog.
- **Favorite Interactive Routing Via Sizes** - Click this button to pop up the *Favorite Interactive Routing Via Sizes* dialog.

Source URL:

[http://documentation.circuitmaker.com/display/CMAK/PCB_Dlg-RoutingSystemOptions_Frame\(\(PCB+Editor+-+Interactive+Routing\)\)_CM](http://documentation.circuitmaker.com/display/CMAK/PCB_Dlg-RoutingSystemOptions_Frame((PCB+Editor+-+Interactive+Routing))_CM)