

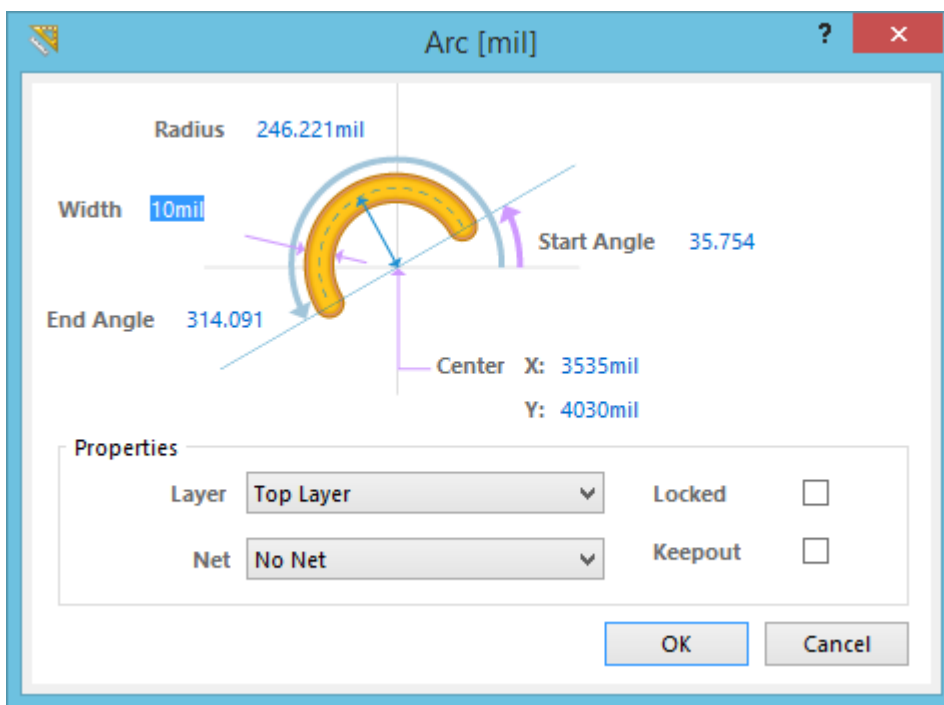
Arc

Modified by Annika Krilov on 22-Jun-2015

Other Related Resources

[Arc \(Object\)](#)

Parent page: [PCB Dialogs](#)



The Arc Dialog.

Summary

This dialog allows the designer to specify the properties of an Arc object. An Arc is a primitive design object, used to create curved shapes on a single layer of a PCB. This could include: curved corners in the routing, a circular ring on the component overlay, or a curved edge on a keepout zone.

Access

The dialog can be accessed during Arc placement:

- By pressing the **Tab** key.

After placement, the dialog can be accessed in the following ways:

- Double-clicking on an Arc object.
- Placing the cursor over an Arc, right-clicking and selecting the **Properties** command from the context menu.

Options/Controls

- **Radius** - The radius of the Arc, measured from the center point, to the center of the Arc line.
- **Width** - The width of Arc line.
- **Start Angle** - The start angle of the Arc, measured from the X axis in the first quadrant (plane geometry).
- **End Angle** - The end angle of the Arc.
- **Center X/Y** - The X/Y location of the Arc center.

Properties

- **Layer** - The layer that the Arc is placed on. Arcs can be placed on any layer other than the system layers.
- **Locked** - Lock the object so that it cannot be edited graphically. A locked object cannot be selected or edited.
- **Net** - If the Arc is a copper object, choose a Net for the Arc. All Nets in the current project will be listed in the drop-down list.
- **Keepout** - Check this box to set the Arc object to act as a Keepout object. A Keepout object is displayed in the layer color, outlined in the Keepout color. A keepout object is used on a signal layer to create a layer-specific keepout. Layer-specific keepouts are not included during output generation.



To toggle the units of measurement used in the open dialog between metric (mm) and imperial (mil), press the **Ctrl+Q** shortcut. This affects the dialog only and does not change the actual measurement unit currently employed for the board, as determined by the **Home | Grids and Units | Metric** or **Imperial** setting chosen on the Ribbon.

Source URL: [http://documentation.circuitmaker.com/display/CMAK/PCB_Dlg-Arc\(\(Arc\)\)_CM](http://documentation.circuitmaker.com/display/CMAK/PCB_Dlg-Arc((Arc))_CM)